

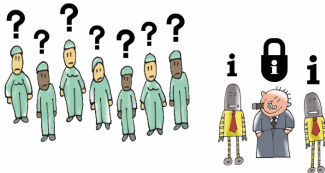
# Which Kind of Company Generates More Wellbeing???

Read the three options below...

## Option A - to work in a company where:



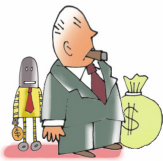
There is the owner and the employees... the owner hires the employees



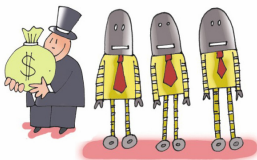
Only very few people know everything that happens in the company



Very few people give orders... most people obey



Most of the earnings go to the owner and to other few people in the company



The managers work to increase the owner's profit



People compete more... and the losers end up being excluded

When the company grows, the owner gets richer and more powerful... the employees remain in the same situation



New people are welcome in the company only if they can increase the owner's profit

## Option B - to be part of a company where:

Everybody is an owner... everybody is an equal member



Everybody has access to all information (maximum transparency)



Everybody participates in the management of the company... in an equal way



The earnings are fairly divided among the members or applied to improve their lives



The leaders work to improve the members' wellbeing



People cooperate more... and everybody wins



When the company grows, all members benefit and develop together



New people are welcome when they can help to build a better life for all the members



## Option C - to start your own small company (individually)

... and now, based on your opinion and experience, answer the questions in the back

*Reflect before answering!!!*

*Mark only one option!!!*

- 1) Which option makes you most capable of fulfilling your material needs (food, housing, security, health and education)?  
 Option A     Option B     Option C
  
- 2) Which option makes you most capable of deciding how to work, of being creative and of expressing your culture and beliefs?  
 Option A     Option B     Option C
  
- 3) Which option makes you most capable of developing yourself through the work... of learning new skills and expanding your mind?  
 Option A     Option B     Option C
  
- 4) Which option makes you more predisposed and capable of participating in society (including interacting with and pressuring the government)?  
 Option A     Option B     Option C
  
- 5) Which option makes you feel more competent, confident and respected... and have a more positive thinking?  
 Option A     Option B     Option C
  
- 6) Which option makes you less vulnerable to be humiliated?  
 Option A     Option B     Option C
  
- 7) Which option makes you feel more socially connected, cared for and significant to others?  
 Option A     Option B     Option C
  
- 8) In which kind of company would you prefer to work?  
 Option A     Option B     Option C
  
- 9) How should the earnings be distributed among the people in a company?  
 Equally  
 Based on skills  
 Based on experience  
 Based on efforts  
 Based on results  
 Based on creativity  
 Other: \_\_\_\_\_
  
- 10) In which kind of company are women treated more equally and fairly?  
 Option A     Option B
  
- 11) In which kind of company are things more organized?  
 Option A     Option B

*Mark only one option!!!*

---

How many TVs do you have at home?  0     1     2     3     More than 3    ▪    Your Age: \_\_\_\_\_

Your Gender:  Female     Male    ▪    You consider yourself:  Wealthy     Middle Class     Deprived

Are you part of a Youth Group?  Yes     No    If Yes, what is the Group's name? \_\_\_\_\_